

LafargeHolcim wins contracts for Europe's largest transport infrastructure project in Paris

LafargeHolcim has been awarded major long-term contracts worth EUR 110 million as part of the Grand Paris Express (GPE) project. The GPE is the largest transport infrastructure project in Europe and represents a total investment of about EUR 38.5 billion. The project will meet the growing city's needs for an improved transport infrastructure and will prepare Paris for the 2024 Olympic Games.

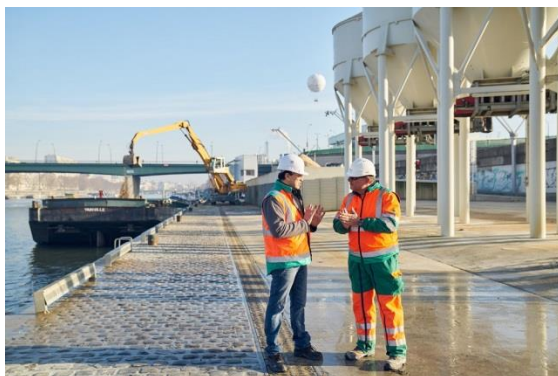
To help realize the GPE's anticipated 200 kilometers of new railway and 68 new rail stations, LafargeHolcim will deliver 600,000 tonnes of aggregates and 260,000 tonnes of cement to produce 650,000 cubic meters of ready-mix concrete. Further LafargeHolcim will use barges on the Seine to sustainably manage excavated earth equal to six times the weight of Burj Khalifa, the tallest building in the world.

Jan Jenisch, CEO: "We are proud to be a key partner on this historic project. With this partnership we are demonstrating our leadership in the building materials industry, making a lasting contribution to improving the transport experience of the people living and working in the Paris area. The project once more shows our capacity and reliability in delivering a large amount of high-quality concrete and our ability to provide efficient logistics and supply solutions. As part of our Strategy 2022 - 'Building for Growth' we have committed to grow our Aggregates and Ready-Mix Concrete segments and the GPE is a major milestone in the delivery of this commitment."

To meet the project's challenging schedule, LafargeHolcim has added mobile ready-mix concrete plants to its existing Parisian ready-mix concrete network, enabling an average production of 300 cubic meters per hour for the GPE. Further LafargeHolcim will remove and treat at least 3 million tonnes of earth from the construction site, then use the excavated material to re-landscape its nearby quarries. For the transportation of both aggregates coming from nearby quarries situated in the Seine valley and the excavated earth, LafargeHolcim will use barges on the Seine river. This solution is more efficient and sustainable than road transportation as two barges can handle the load of 220 trucks. With this concept LafargeHolcim will also meet the challenge of transporting large amounts of material through an urban area with over seven million inhabitants.

With the contract LafargeHolcim is continuing a tradition of supplying aggregates and concrete to the French market that has endured for more than one-hundred years. The company aims to work on the GPE over the next 15 years.

More details and videos on the GPE project can be found [here](#).



About LafargeHolcim

LafargeHolcim is the global leader in building materials and solutions and operates four business segments: Cement, Aggregates, Ready-Mix Concrete and Solutions & Products, which includes precast concrete, asphalt, mortar and building solutions. With its broad portfolio LafargeHolcim solves the toughest challenges masons, builders, architects and engineers are faced with, from urbanization to population growth and the demand for affordable housing. Headquartered in Switzerland, LafargeHolcim holds leading positions in all regions across the globe. It employs approximately 80,000 employees in around 80 countries and has a portfolio that is equally balanced between developing and mature markets. LafargeHolcim is listed on the SIX Swiss Exchange and on Euronext Paris, and is a member of the Dow Jones Sustainability Indices (DJSI) European Index.

More information is available on www.lafargeholcim.com

Follow us on Twitter [@LafargeHolcim](https://twitter.com/LafargeHolcim)

About LafargeHolcim in France

In France LafargeHolcim operates in three business segments: Cement, Aggregates and Ready-Mix Concrete, LafargeHolcim France develops innovative solutions to meet the challenges in sustainable construction and circular economy. The company is also strongly engaged in reducing its impact on the environment (ISO certifications, Unicem CSR chart, engagement in biodiversity recognized by the SNB (National Strategy for Biodiversity)).